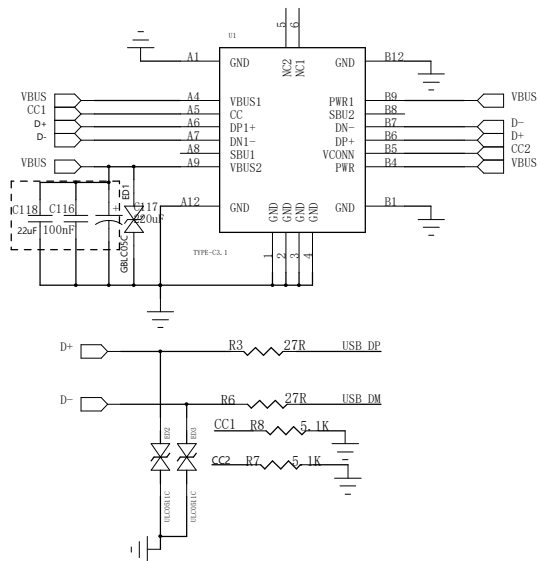
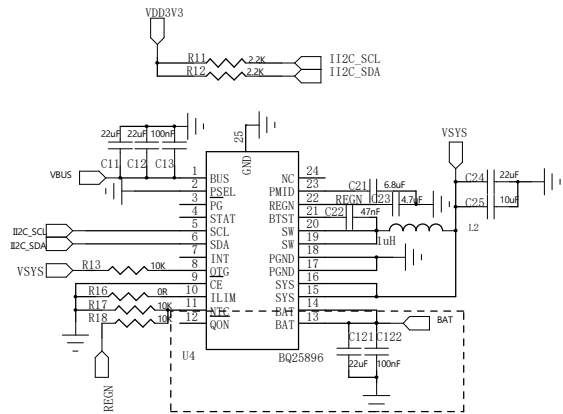


TYPE-C



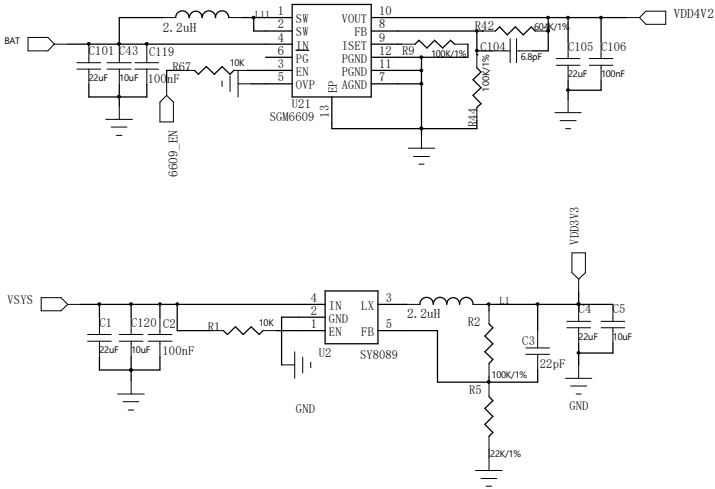
充电电路

SCL-----IO14
SDA-----IO13

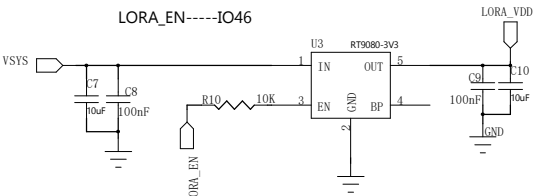


DCDC电源

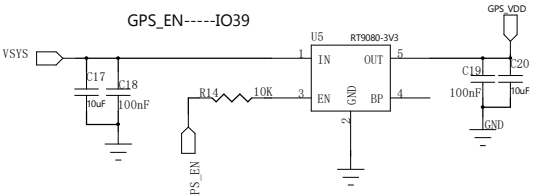
6609_EN-----IO41



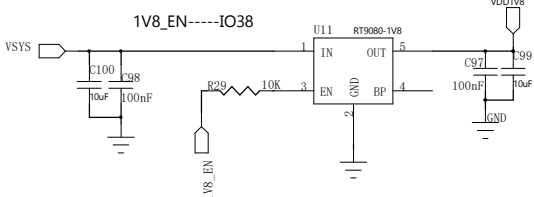
LORA_EN-----IO46



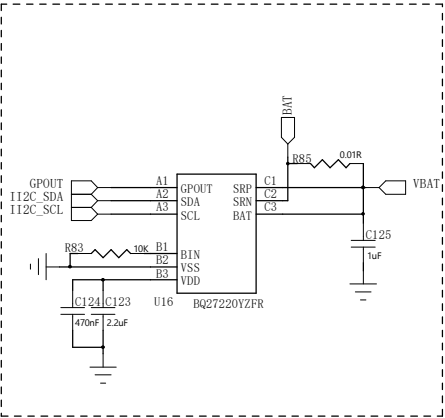
GPS_EN-----IO39



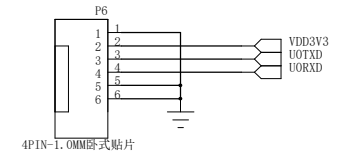
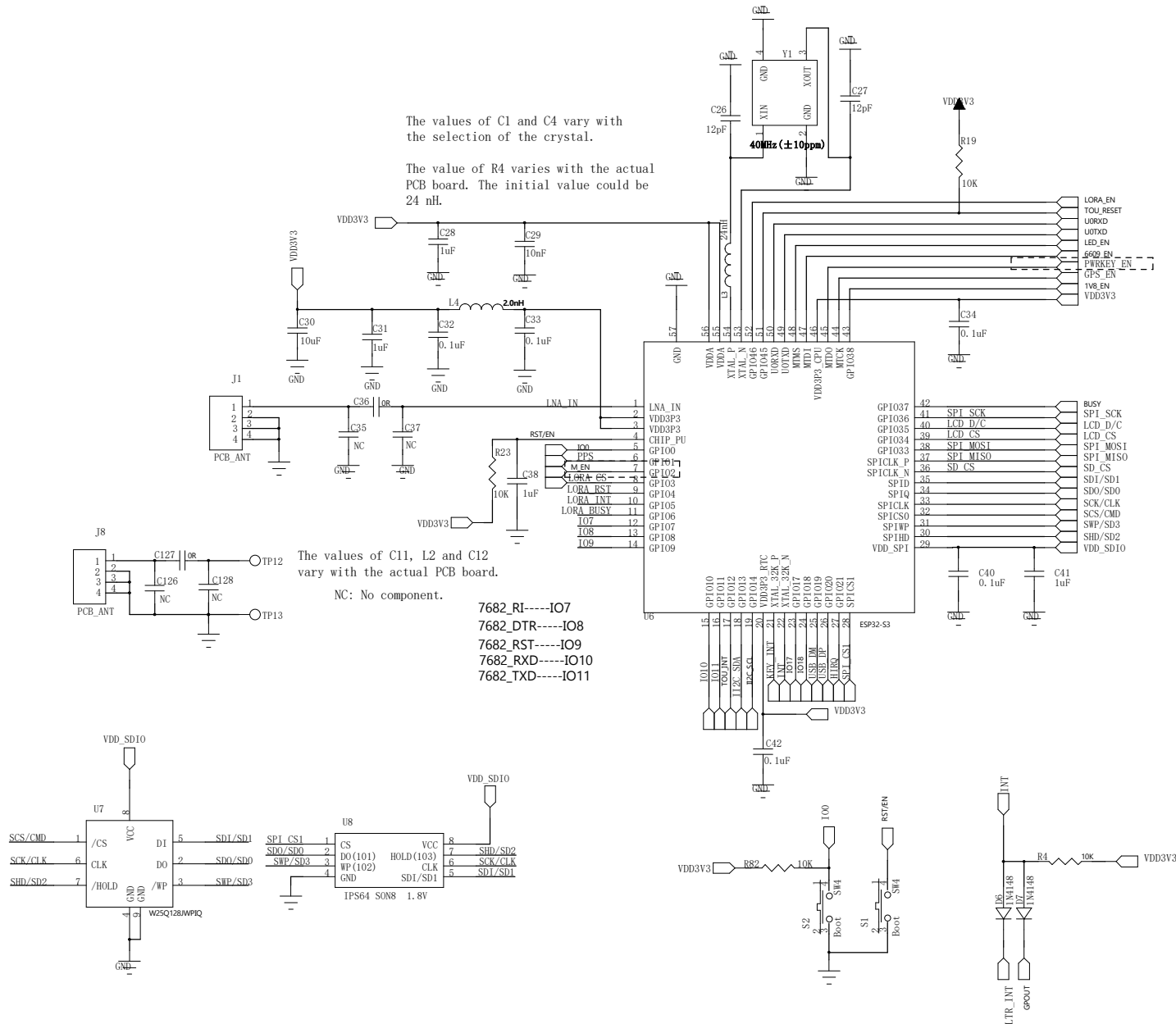
1V8_EN-----IO38



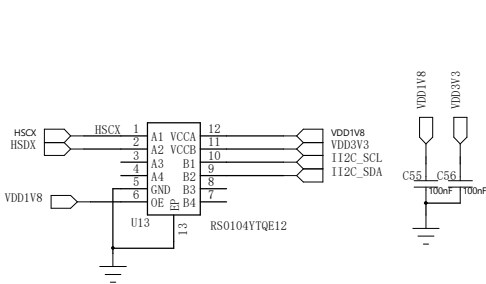
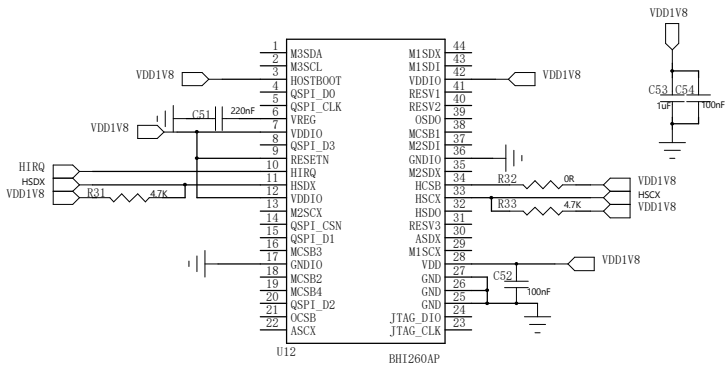
电池防反



ESP32-S3

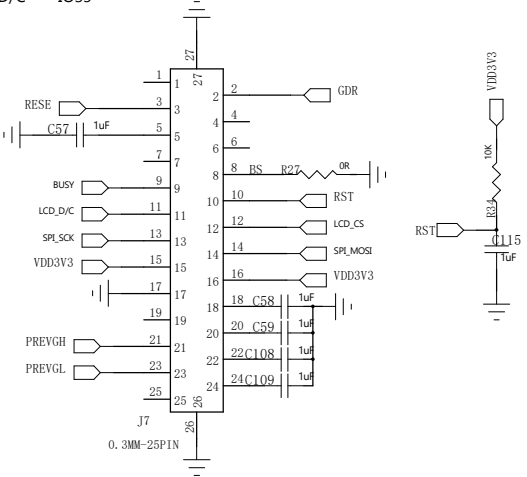


SCL-----IO14
SDA-----IO13
HIRQ-----IO21

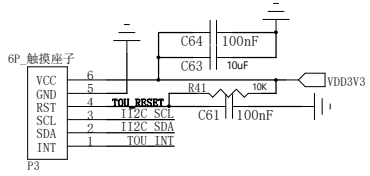


LCD

BUSY-----IO37
MOSI-----IO33
SCK-----IO36
LCD_CS-----IO34
LCD_D/C-----IO35



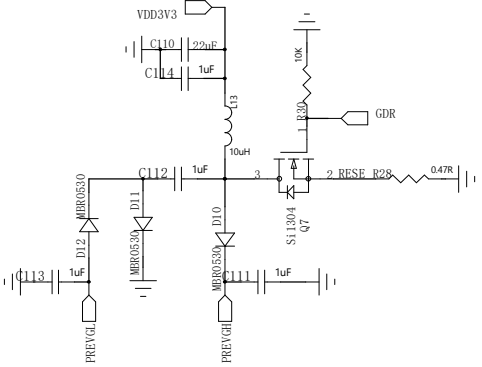
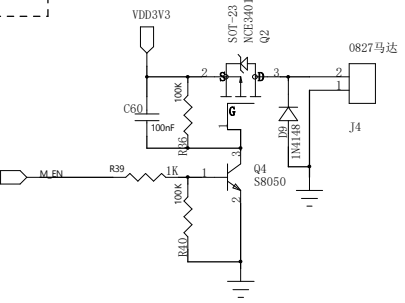
SCL-----IO14
SDA-----IO13
TOU_INT-----IO12
TOU_RESET-----IO45



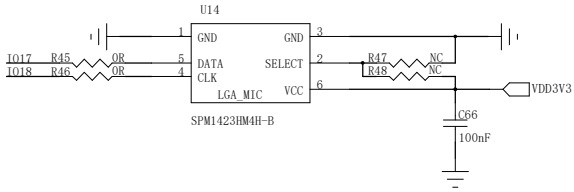
触摸

马达

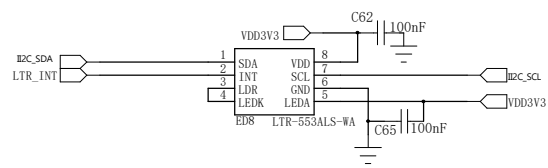
M_EN-----IO2



麦克风

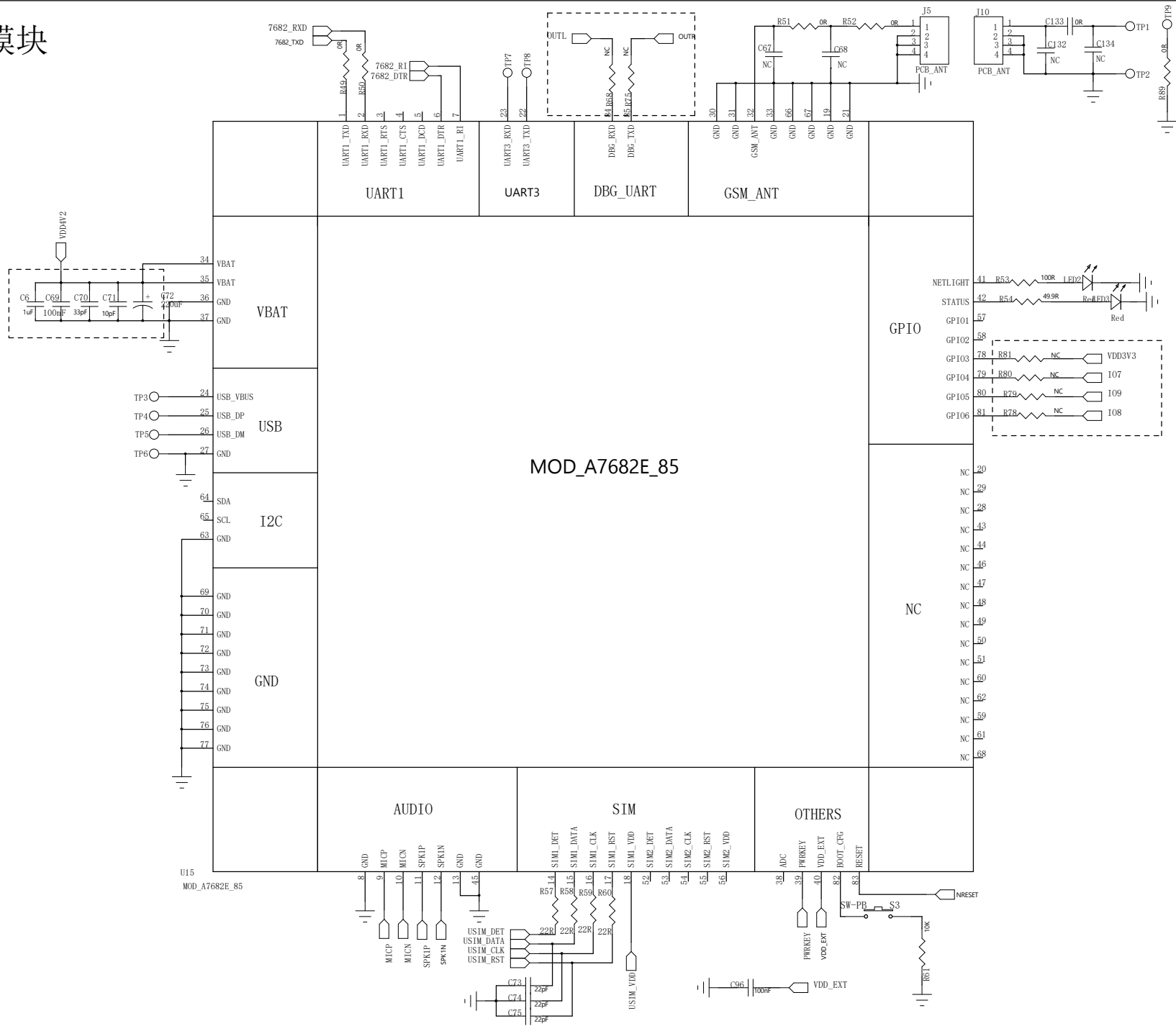


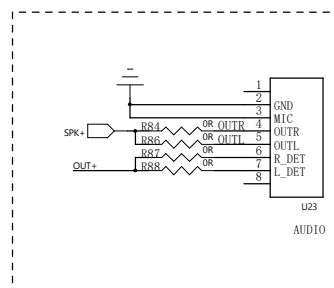
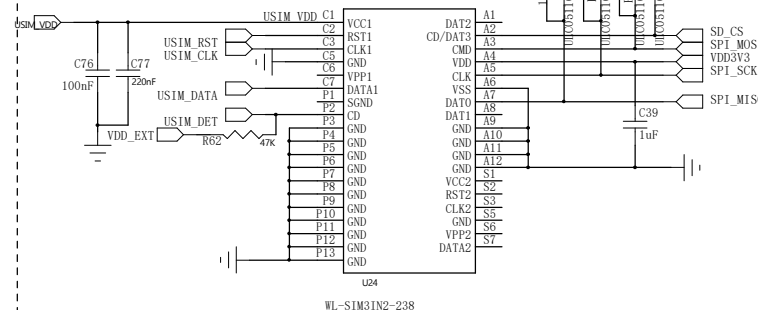
SCL-----IO14
SDA-----IO13



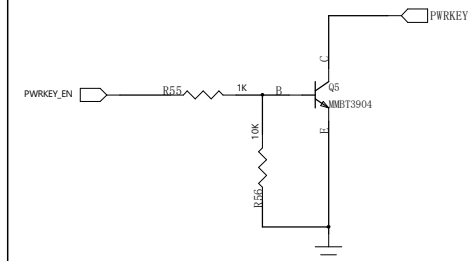
光感传感器

7682模块

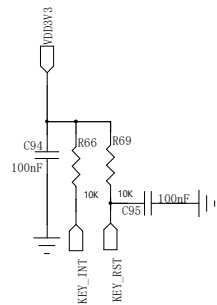




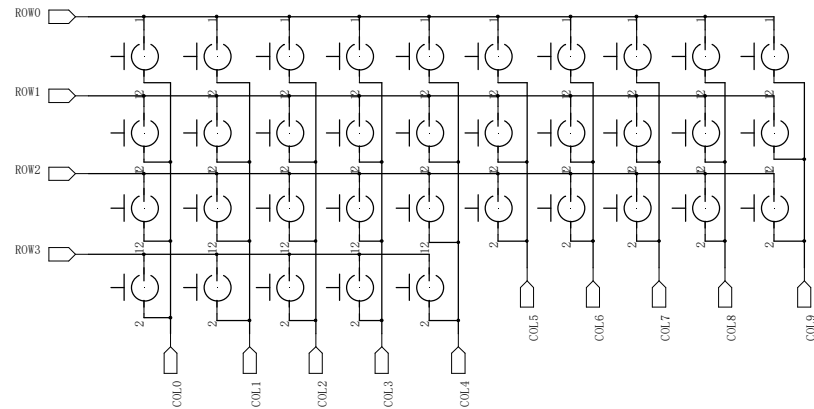
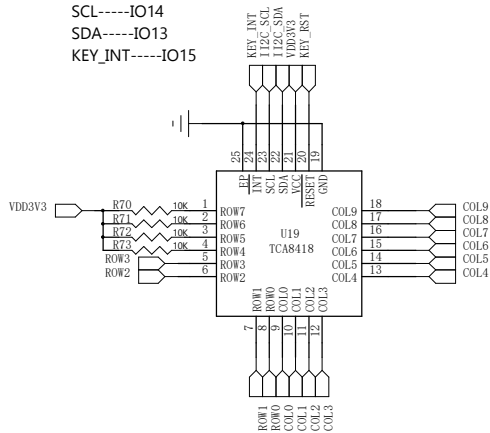
PWRKEY



矩阵按键



SCL-----IO14
SDA-----IO13
KEY_INT-----IO15



按键灯

LED_EN-----IO42

